

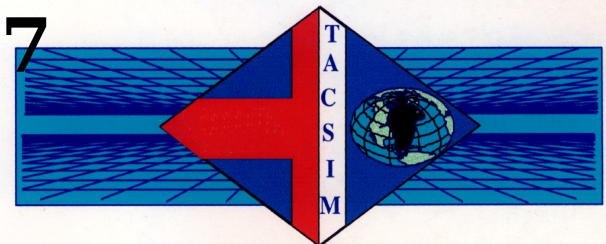
Tactical Simulation - TACSIM -

NATIONAL SIMULATIONS CENTER

Ft. Leavenworth, KS

Mr. Kurtis Ritchey

(913) 684 - 8147





AGENDA

- **NSC Intelligence Section Mission.**
- **TACSIM: Purpose / Attributes / Functionality**
- **Simulation Architecture.**
- **TACSIM Exercise Modes.**
- **TACSIM Strengths / Limitations.**
- **TACSIM Fielded Sites.**
- **Planned Improvement.**
- **TACSIM Development Cycle.**
- **Questions.**



NSC INTEL SECTION MISSION

- **Combat Developer (CD) for Army Intelligence Models and Simulations (M & S).**

- **User Requirements**

- **Verification, Validation & Accreditation (V V & A)**

- **Fielding**



- **Support New Equipment Training (NET)**

M & S User Representative for the Army Intelligence



PURPOSE OF TACSIM

- **Originally developed to test Intelligence and Electronic Warfare (IEW) equipment.**
- **Now the Army's primary intelligence simulation.**
- **Simulates and stimulates across the entire spectrum of intelligence operations.**



ATTRIBUTES OF TACSIM

- **Provides intelligence training from Joint Command to individual level analyst, collection managers, and staffs.**
- **Simulates the collection and reporting of reconnaissance assets.**
 - **COMINT**
 - **HUMINT**
 - **ELINT**
 - **IMINT**
- **Near real-time simulation.**



TACSIM FUNCTIONALITY

Ability to simulate any intelligence sensor from National through Division level.

• 40+ Preprogrammed sensor models.

COMINT	ELINT	IMINT	HUMINT
U2 SENIOR SPEAR	U2 SENIOR RUBY	U2 HCAMERA	CI / HUMINT
RC135 RIVET JOINT	RC135 RIVET JOINT	U2 SYERS	LRSU
RC130 COMFY LEVI	ARL	U2 ASARS	SOF (RECON)
ARL	RF4C TEREK	ARL	EPW
RC12 GUARDRAIL	SEA6B PROWLER	RF4C	REFUGEE
EH60 QUICKFIX II	RC12 GUARDRAIL	F14 TARPS	LINE CROSSER
PRD10/11/12	OV1D	PIONEER	DOC EXPLOITATION
TSQ138 TRAILBLAZER	MSQ114 TEAMPACK	OV1D	NATIONAL
TRQ32 TEAMMATE	SR71	HUNTER	GENERIC
MLQ34 TACJAM	NATIONAL	PREDATOR	
TLQ 17A TRAFFICJAM	GENERIC	JSTARS	
ETRACKWOLF		SR71	
GENERIC		NATIONAL	
		GENERIC	

	AIR FORCE
	ARMY
	NAVY/MARINE
	NATIONAL
	GENERIC
	JOINT/THEATER

- Generic sensor capability.
- Sensors perform like “real world” sensors



TACSIM FUNCTIONALITY

(**INTEL REPORTS**)

- IIR / IPIR** - Imagery Interpretation Reports / Initial
Photographic Interepretrability Report -IMINT
- RECCEXREP** - Reconnaissance Exploitation Report - IMINT
- REXREP** - Radar Exploitation Report - IMINT
- TACELINT** - Tactical ELINT Report- ELINT
- KLIEGLIGHTS** - Technical TACREP - COMINT
- TACREP** - Tactical Report - COMINT
- SALUTE** - Size, activity, location, unit, time, equipment -
HUMINT
- SITBREPS** - Situation Report - HUMINT



INTELLIGENCE ANALYSIS

AND INFORMATION REQUESTS

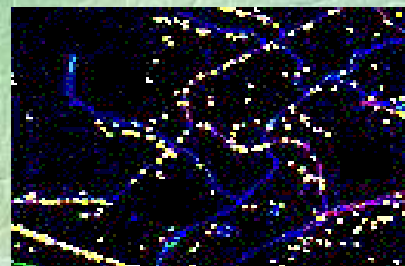
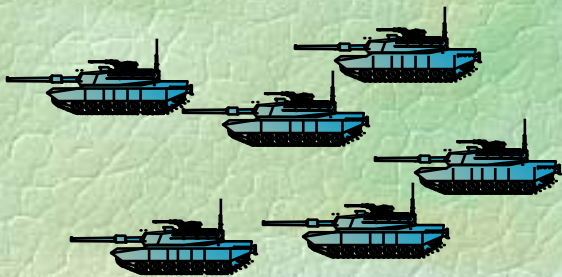
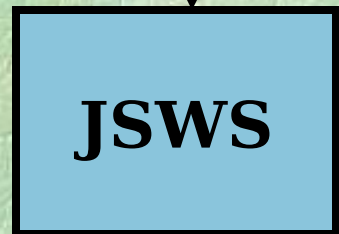
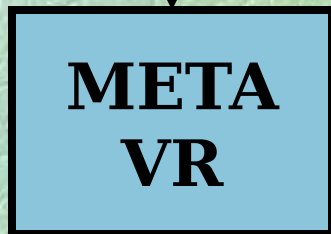


TRAINING AUDIENCE

ASAS

CGS

INTELLIGENCE REPORTS





TACSIM EXERCISE MODES

- **STAND ALONE**

Pre-planned or interactive tasking for **individual analyst or intelligence staff training.**

- **CBS DRIVEN**

CBS drives movement and attrition while TACSIM provides **Corps and Division staffs** with training on intelligence management and tasking.

- **RE-RUN**

Using an exercise which has already occurred. **Allows for reviews of lessons**



STRENGTHS

HIGH FIDELITY MODELING of:

- U.S. Intel collection system parameters.
- Technical OPFOR portrayal.
- Allows for classified training.

ENTITY BASED battlefield visualization (META-VR / JSWS).

REAL WORLD COMMUNICATIONS:

- Links to C4I systems.
- Suite contains real-world communications center.

• ***Train As You Will Fight***
• Doctrinal intelligence report message

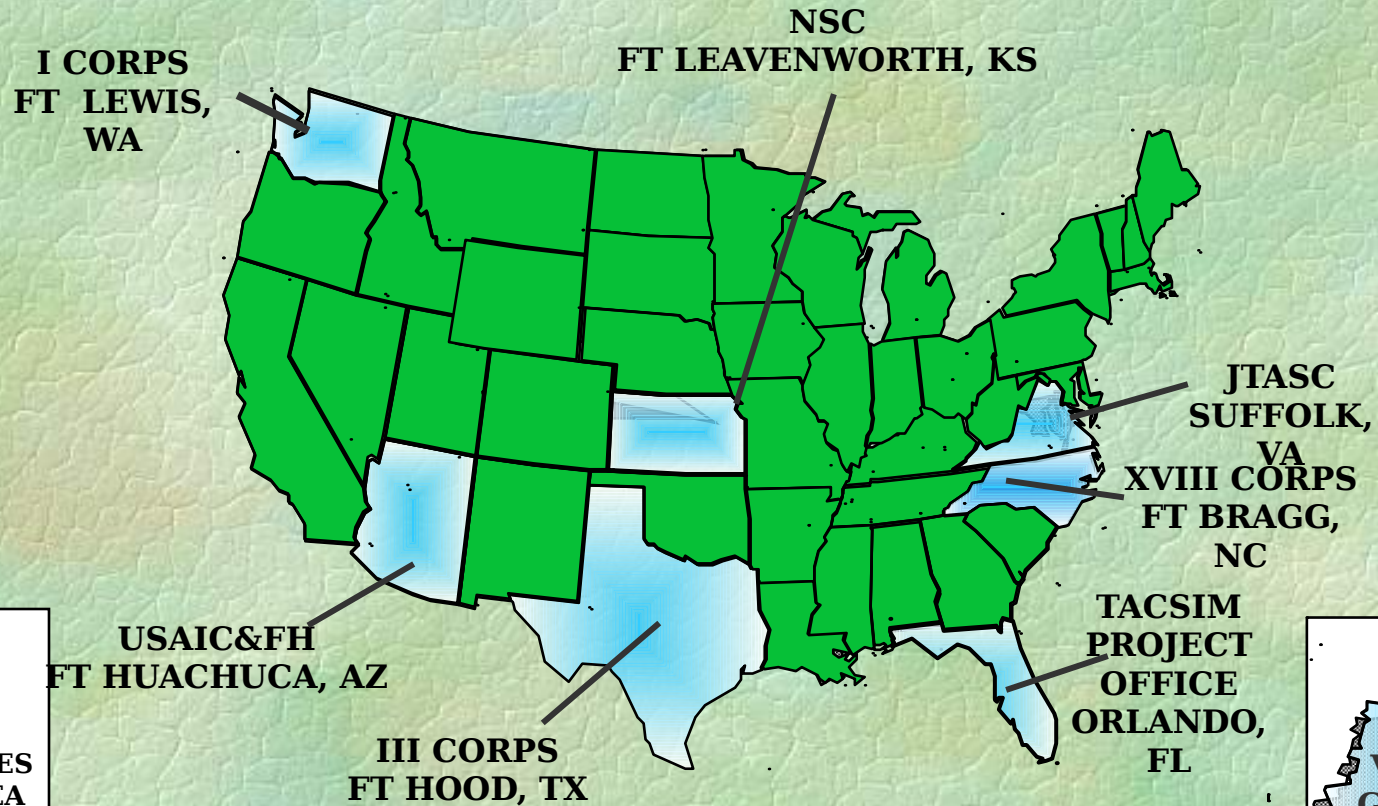


LIMITATIONS

- **High fidelity requires extensive data base preparation.**
- **Requires secure facilities and communications architecture.**
- **Currently does not provide a Red on Blue intel capability.**
- **Requires technically skilled team of operators.**

INTELLIGENCE SIMULATION

TACSIM FIELDDED SITES



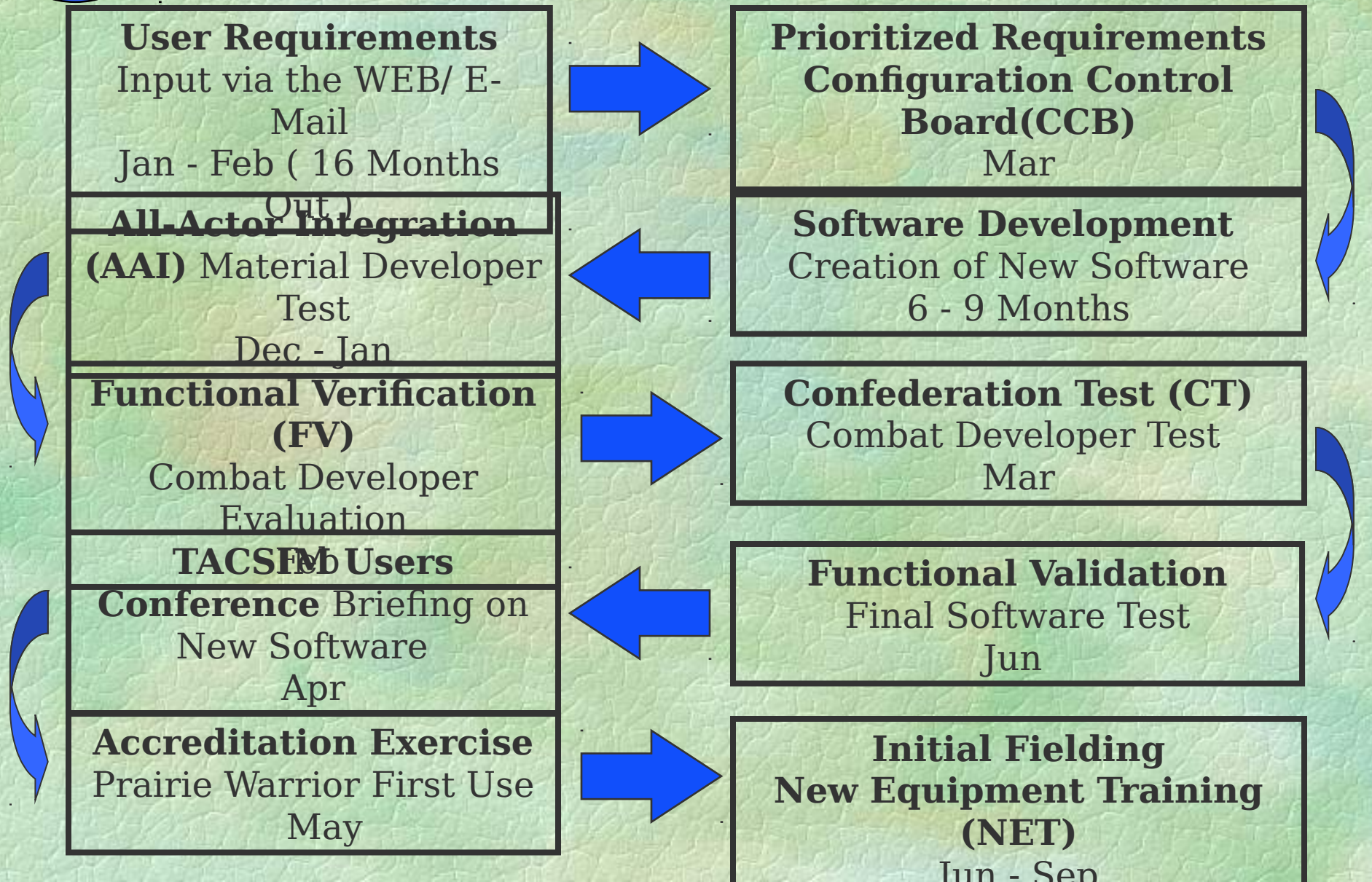
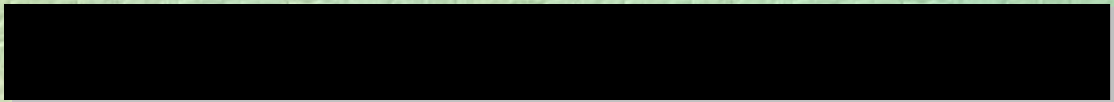
PRINCIPAL EXERCISES

Unified Endeavor	Ulchi
Focus Lens	Prairie Warrior
Warfighters	



PLANNED IMPROVEMENTS

- **Updated collection sensors.**
- **Remote tasking terminal.**
- **Unclassified reporting capability.**
- **Automated database build capability.**
- **Weather.**
- **Improved HUMINT.**
- **Distributed Interactive Simulation Capable.**





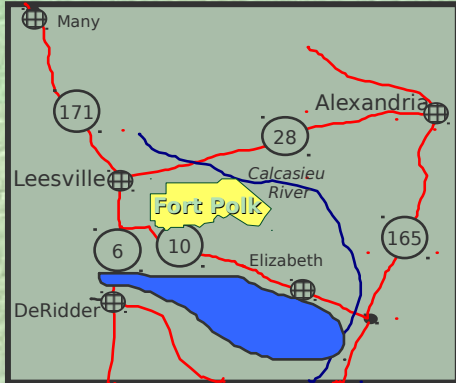
100 x 100 km Bo

Transition From STE to LIVE



**Division
Reconnaissance Fight
15 SEP (D+6) 1200Hrs
to 2000Hrs**

**LIVE
BOX**



32 AO

FTX AO

1 10th MTN

1 248



BRDM

- Wraparound vehicles deleted at approx 1900 hrs.
- Live & constructive units continue movement towards PL GREEN.

4

- Division Recon advances to edge of Military Reservation at 1830hrs.

3

- Division Recon "fights through" the 2ACR.
- Movement synched with JRTC 2ACR Spot Report Log. Unit loses 7 BRDMs.

2

- Division Recon begins fight against 2 ACR with 16 BRDMs and 4 V-150s

1

CPX AO

TN

4 BRDMs
2 V-150s

CPX

5 BRDMs
2 V-150s

FTX

Live

Live

SI

SI

SI

SI

SI

SI

SI

SI

M

M

M

M

M

M

M

M

2

2/2

2/2

2/2

2/2

2/2

2/2

2/2

E

F

G

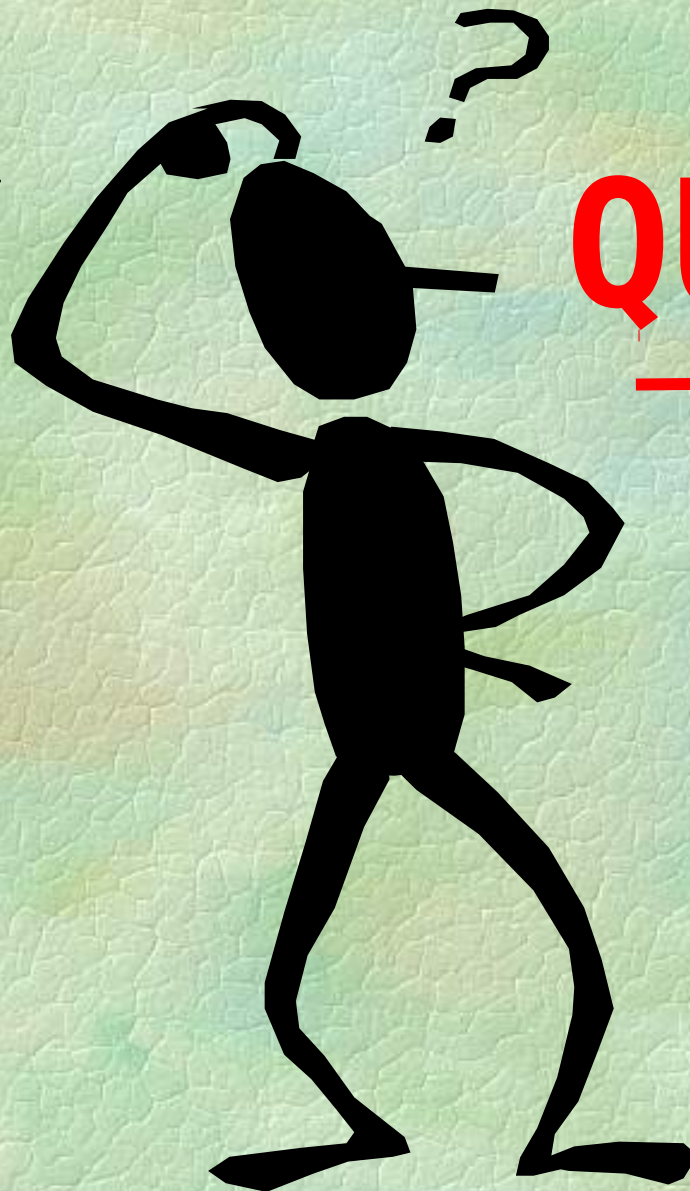
H

How

4

2

2



QUESTIONS

